



Introduction

eSolve Eurus is a full-featured, next-generation integrated e-commerce product that offers the best online experience to all users no matter the device used.



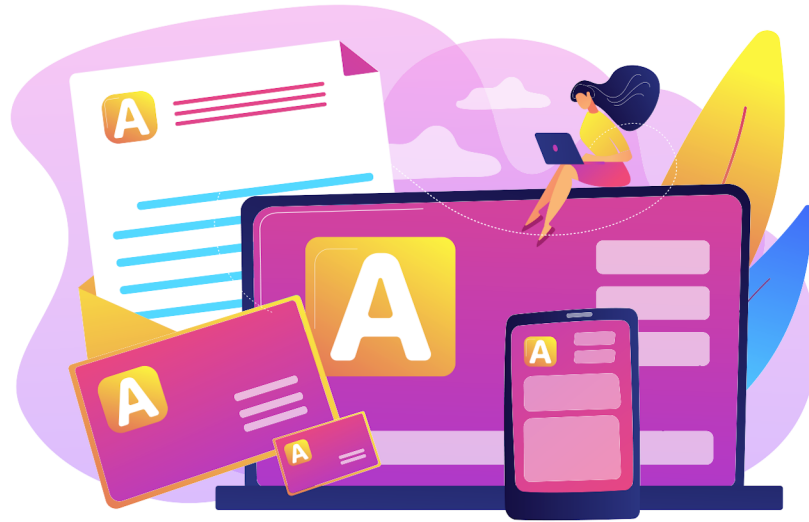
About Eurus



What if your mobile app, website and mobile website could be one product? That is exactly what eSolve Eurus offers. A complete, multichannel e-commerce **Progressive Web Application**. Sell your products on Android, iPhone or Windows Desktop, all from one application.

Why is it that the majority of websites and e-commerce stores are built for desktop use when statistics show that **60-70% of users shop from their mobile devices?** eSolve Eurus solves that problem completely by offering one platform for all device types and sizes.

Built on Google's Angular web platform and hosted on the Amazon EC2 network, you never have to worry about scaling your e-commerce solution ever again. It is packed with powerful features sure to help drive sales and build on your online success.



Key Features

Please take note of the following key Features

- Mobile First - Progressive Web Application.
- One Application for Desktop, Mobile and Apps.
- Integrates with accounting software.
- Full-featured content management.
- REST API - For Developers.
- Rapid Deployment.
- Content Management.
- Stock Management.
- E-commerce Features.
- Customer Relations.

Read more on

<https://www.esolve.co.za/esolve-features>





IQ Retail - Integration

The eSolve Platform has been integrated with the IQ Enterprise accounting / ERP software package. This means that if you have a retail or wholesale outlet and want to integrate your IQ system too a website for online sales or live catalogue, things just got a whole lot easier.

Data that can sync.

- Stock details such as stock code, stock name, extended description, pricing, stock on-hand and images can be placed online. Custom stock fields are also supported.
- Client accounts including their specific pricing and account credit balance and credit limits. Open item account statement.
- Client Sales History. Once and sales order has been converted to an invoice, the invoice number and balances can be synced back.
- Promotions.
- Quotes and Order requests.
- Invoices. It is possible to post invoices directly to IQ instead of Sales Orders.
- Stock on-hand figures specific to the branch and warehouse. Syncing of all stock on available stock only can be configured.

Read more on

<https://www.esolve.co.za/iq-retail-ecommerce-integration>



Pricing

The software is priced in one of three options.

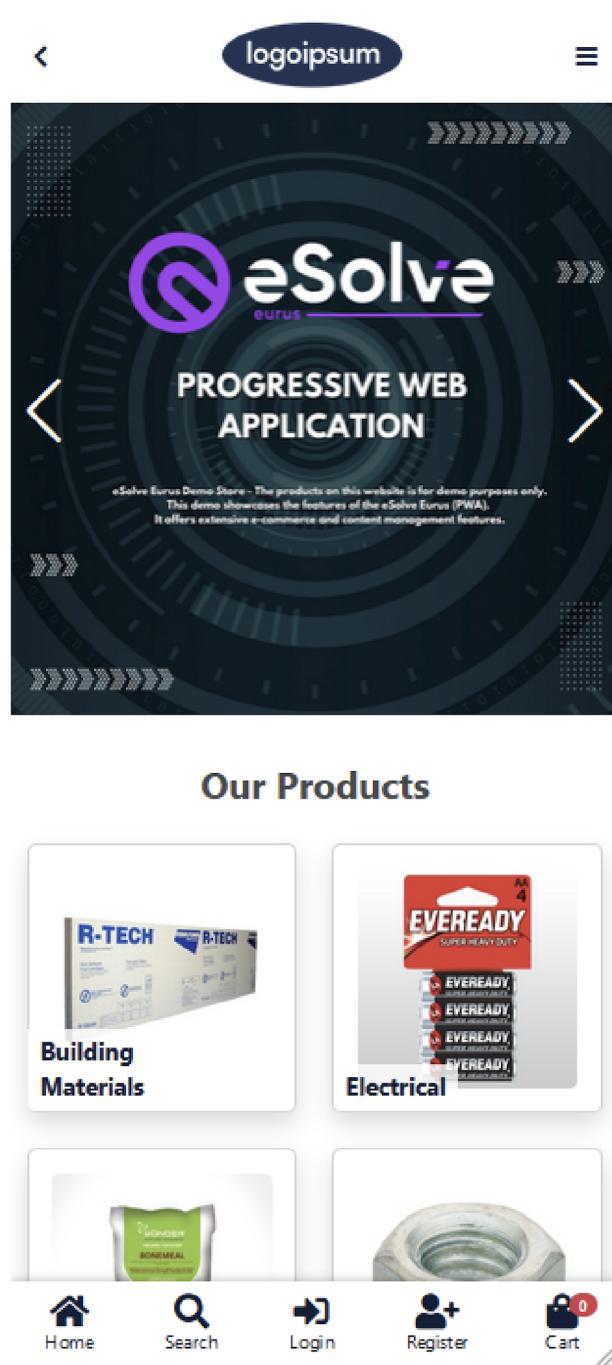
There are no once-off costs and no contracts.

- **Standard Plan** - This plan is good for smaller businesses embarking on the e-commerce journey. It offers the base application and optional integration. Support is offered via email only.
- **Business Plan** - Suitable for small and bigger businesses that require more resources and a higher level of support. The eSolve REST API can be accessed allowing programmatic manipulation of the eSolve content. We can also offer the implementation of your own designed Angular Application.
- **Enterprise Plan** - Aimed at large e-commerce websites with high resource demands. Includes an extensive Service Level Agreement and reduced licensing costs per branch. You can also assist in setting up your own Amazon hosting environment. You also have access to the app source-code.

Read more on

<https://www.esolve.co.za/esolve-eurus>

Example Application



If you are looking for a demonstration of the eSolve Eurus system, please visit the live demo application. This show the implementation of a hardware shop. For the best result, please run the demo on your mobile device.

View Now

<https://templatealpha.geckonet.co.za/home>



IQ Retail Requirements

If you are going to have IQ integration to the application then we will require the following information. If you will be managing the stock manually then you can skip over this section.

- Access to your server via Unattended AnyDesk or Microsoft Remote Desktop (preferred method).
- IP Address or Domain name of the server / AnyDesk ID.
- Windows User added named "esolve" and any secure password that meets your requirement. Please send your password to us using a service like pwpush.com
- License and activate the IQ API. You will do this via your IQ Reseller or Directly with IQ. You will have to re-register IQ for this to work.
- Please specify the company names for your IQ.
- Add a new user with the number 999 and pin 1399. If 999 is already taken, any other id will be fine.
- If you are going to make use of multiple-branch integration, please send us the company codes for each branch. Also please specify which company is your master company.
- Please specify if you want to use "Stock Available" or "Total Stock On Hand". If you use "Stock Available", Open Sales Orders adjust the available stock level to onhand minus what is on the order.
- Do you want to use the wholesale module - Debtors Sync?

Contact Information

Why not partner with us?

If you think that our eSolve product offering is something your clients might be interested in, please visit our business partner page for more information regarding our partnership program:

<http://www.esolve.co.za/iq.esolve.business.partner>



WERNER RÖTTCHER

For all website queries
werner@21digital.co.za
086 101 2210

JAMES DE JAGER

For all support queries
jt@21digital.co.za
086 101 2210

www.esolve.co.za

support@21digital.co.za

086 101 2210

Unit 10 A

Old Dutch Square

13 Old Paarl Road

Bellville

About IQ Retail (Pty) Ltd

IQ Retail (Pty) Ltd is a software development company that provides expertise in complete financial and business administration solutions. IQ Retail has been active in the development of business systems specialising in the accounting and retail management environment since 1986. In this highly competitive market, IQ Retail has grown to become one of the premier providers of innovative and strategic business solutions.

Contact IQ Retail

SA +27 21 880-0420

| 0861 IQ INFO / 0861 47 4636

| info@iqretail.co.za

| www.iqretail.co.za